

# QUOTES – ADHD



Erasmus+



*The course is eligible for funding  
from Erasmus+ Programme*



EPIMORFOTIKI  
KILKIS

## Course Summary

European Commission Communication Improving the Quality of Teacher Education states "Changes in education & in society place new demands on the teaching profession. [...] classrooms now contain a more heterogeneous mix of young people from different backgrounds and with different levels of ability and disability. [...] These changes require teachers not only to acquire new knowledge and skills but also to develop them continuously".

The Course aims to enable teachers to understand the nature of Learning Difficulties, particularly focusing on the "Attention-deficit/hyperactivity disorder" (ADHD) and how these influence the school perform, and the process to recognize LDs. Special emphasis is given to the specific skills & knowledge that teachers and other actors involved need to acquire.

The Course is designed for primary & secondary education teachers by offering a set of thematic modules which cover integrated teaching skills related to the approach of "first time reading" mechanisms, student with ADHD profile & support, the diagnostic institutions including assessment methods & techniques, cooperation with parents and specialists, the EU legislation in force & relevant institutions.

## Target Group

- Special Education School Teachers;
- General Education School Teachers;
- Mental Health Professionals;
- Special Education Professionals.

Participants should come from one of the European [countries eligible](#) for Erasmus+ projects.

# "QUOTES ADHD" – HOW TO APPLY

*It is important to note that  
"Individuals cannot apply  
directly for a grant".*

## Enrolment

An eligible participating **organization/institution** must apply for a grant to the **National Agency** of Erasmus+ Programme in the country in which the applicant organization is established.

Applicants have to submit their grant application by **5 February 2019 at 12.00** (midday Brussels time) for projects starting between 1st June and 31st December of the same year.

## Who can attend the course

Participants must be aged 18+ and be residents in the country of the nominating partner organization.

Staff engaged in primary and/or secondary education, in a working relation with the sending education institute(s), as well as staff involved in the strategical development of the institute(s).

Maximum number of participants: **20**

National Agencies may organize a second round of applications.

In that case, applicants have to submit their grant application by **4 October at 12.00** (midday Brussels time) for projects starting between 1<sup>st</sup> January and 31<sup>st</sup> May of the following year.

**Apply now**

## Location and Dates

The course takes place in **Thessaloniki** (GR) on:

- **25 Aug.2019 - 31 Aug. 2018**
- **15 Sep.2019- 21 Sep. 2019**
- **06 Oct.2019 – 12 Oct. 2019**
- **08 Mar – 14 Mar 2020**
- **29 Mar – 04 Apr 2020**
- **10 May – 16 May 2020**

**Epimorfotiki's Pic Number:**

**949382651**

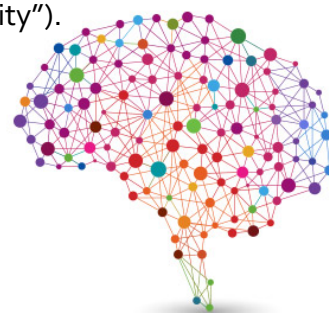


## Costs/Funding Opportunities

Each participant will be charged **500€** for the 5 days training course. This fee is analysed as follows:

A) **Course Fee:** 5 days course X 70,00€ per day = **350€**

B) **Organization Support:** Each participant receives 350€ for "Organization Support". Epimorfotiki Kilkis will charge each participant **150€** for administration and organization costs (preparation educational activities, cultural activities, learning validation and certification with "Europass Mobility").



*The course is eligible for funding from Erasmus+ Programme Key Action 1 (KA1)*

Apart from the above fees, the funding from Erasmus+ also covers:

1. **Travel costs.** It refers to the travel from the place of origin to the venue of the activity and return. The amount is based on the travel distance and is calculated using the [distance calculator](#) supported by the EC.

- ## 2. Accommodation & Meals.
- These costs are covered through "Individual Support" of the Erasmus+ Grant. The amount depends on the Country where the course is delivered. For Greece the amount between 70 and 140€ per day and is specified by the National Agency in participants country.

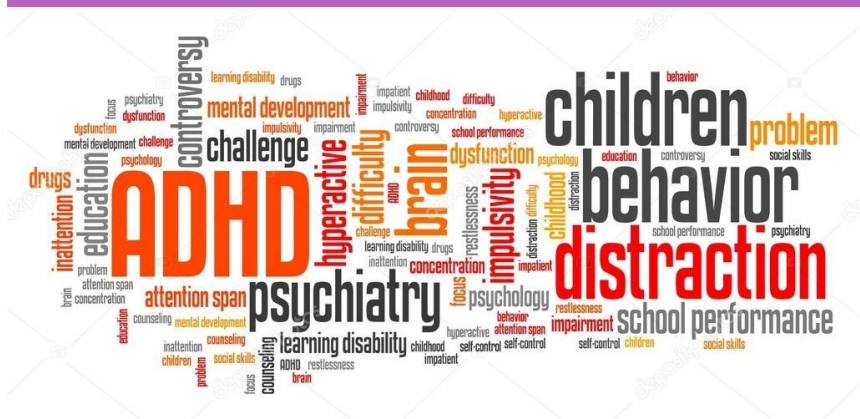
This amount covers the cost of the hotel and the meals during participants' stay in Greece. The participant can arrange by himself the hotel and choose where to spend the meals. On the other hand, Epimorfotiki Killis can support participants by proposing solutions both for the hotel as well as for the meals.

*Epimorfotiki Kilkis is committed to assist and to support participants' organization during the submission phase by providing participants with the necessary information, materials and documents.*

[Apply now](#)

# Preparation

The participants' preparation begins along with their enrolment in the course. The trainers and a Tutor, who will be assigned, will have the task to manage the preparation. The Tutor will respond quickly to questions or requests from candidates, and to keep in touch regularly. Preparation will be based on Epimorfotiki's **e-learning Moodle Platform, on social media and emails**. Participants, following their enrolment will be asked to access the Platform, where most of the training materials will be available.



Together with the educational material, during preparation participants will:

- ✓ receive texts, videos and any other training material related to the course topics for preparatory purposes, so that they can get acquainted with the main thematic that the course will deal with and

the expected level of technical language;

- ✓ be invited to answer a Questionnaire related to their specific skills, i.e. on the mechanisms of "first time reading", on attention deficit & hyperactivity disorders & relevant diagnostic methods, etc., their expectations, as

well as suggestions about topics to go deep into, or treated as examples.

Participants need to have some fluency in English (level B2) and also be PC literate;

- ✓ be acquainted on the use of the Moodle platform;
- ✓ receive information about culture, customs and everyday life in the hosting country, as well as the cultural programme during their stay in Greece.

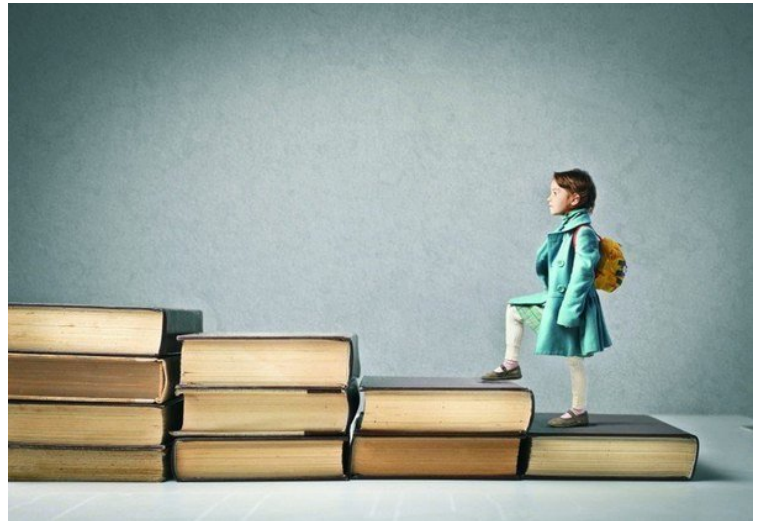
Collection of participants' individual profiles beforehand will help organizers to fine-tune contents and objectives. Participants will be given the opportunity to present them-



selves and their "culture" in a 3 minutes presentation, thus contributing to know each other and to improve the ambience of the course. The preparatory phase is important because it allows organizers to get acquainted with the team of participants, to identify their needs and knowledge level, thus to deliver a course that will satisfy fully the needs of each individual. The task assignment aims at self-preparation, and it also might help participants to get more easily acquainted with the specific learning situations they will encounter.

## Aim of the Programme

The Course aims to enable teachers to understand the nature of Learning Difficulties, particularly focusing on the "Attention-deficit/hyperactivity disorder" (ADHD) and how these influence the school perform, and the process to recognize the LDs. Special emphasis will be given to the specific skills and knowledge that teachers and other actors involved need to acquire.



## Objectives

- Facilitate the identification and characteristics of learning disability/disabilities and particularly those related to Attention-deficit/hyperactivity disorder (ADHD);
- Develop the teachers' skills for handling Attention-deficit/hyperactivity disorder (ADHD);
- Raise awareness concerning school integration difficulties of children with Attention-deficit/hyperactivity disorder (ADHD);
- Understand the different educational strategies and the practical approaches to such strategies by Teachers and Education Professionals;
- Get Teachers and Education Professionals closer to the European Policies, Normative and Initiatives concerned.

## Thematic Field of the Programme (Modules)

1. Learning Difficulties
2. Learning Difficulties in Primary Education – First Time Reading
3. Attention Deficit Hyperactivity Disorder ADHD
4. Case Study of students with L.D. and ADHD
5. Diagnostic Institutions
6. Cooperation of parents - educators – specialists to help children with L.D.
7. Learning Difficulties in Secondary Education
8. Professional guideline of students with L.D.
9. Useful Links & Bibliography

### CERTIFICATION

Participants will get:

- a Certificate of Attendance, issued by Epimorfotiki Kilkis;
- the [Europass Mobility Certificate](#)

## Skills To be developed

- Creativity & initiative;
- Ability to assess & solve problems;
- Ability to acknowledge skills & identify LDs;
- Ability to evaluate skills and competences
- Learning to learn competence;
- Handling LDs & ADHD;
- Recognize the mechanisms of "First time reading";
- Ability to read students' profile with ADHD;
- Ability to work in team;
- Investigate a scientific question.

## Methodology

Participants are supposed to be experienced in education matters, as well as in their own educational system and practices; therefore, course provider intends to facilitate this expertise in a way that profits the whole group. On this regard, the course planning takes into consideration:

- the methodology used emphasizes participants' active involvement in the process with presentations on specific topics, case studies taken from participants' own experience to be discussed. This way participants may learn with and from each other which can help learners to develop particular professional skills'
- less traditional teaching in the classroom and more practicing and use of appropriate tools, collaborative environments, workshops, according to the participants' skills and background;
- a balanced rotation between group activities and individual learning is adopted to keep participants attention vivid;
- a new pedagogical approach, a variety of training methods and working techniques are offered in correspondence to the participants' different learning styles in order to strengthen didactic and key competencies of teachers;
- organizers adopt a flexible time management during the course in order to meet different expectations in the group. Also, changing methods, regular breaks, pauses for own reflection, energizing games, and other balancing activities are adopted to compensate the demanding situation to work in a foreign language.

## Follow-up

Course provider will apply some methods and tools that might help participants' follow up

- ✓ Use of Epimorfotiki's e-learning Moodle Platform, so as to provide to the group the opportunity for mutual exchange of experiences and materials and to communicate with the tutor and the trainers;
- ✓ Participants will be supported to establish their own forum, by doing it together during the course;
- ✓ In a pre-determined time after the course a Questionnaire will be send to the participants about the impact the course had and how did they apply the acquainted knowledge;
- ✓ The network composed by educational institutions and adult teachers/trainers established during (and as a result of) the course in order to facilitate the exchange of experiences, best practices and information on innovative developments will be supported and fostered.

*The whole follow-up process is planned in a way to allow participants to test, evaluate, complete and upgrade the knowledge acquired*



56 Doiranis Str., PC 61100, Kilkis, GR

+30 23410 29690, 28705

[www.epimorfotiki.gr](http://www.epimorfotiki.gr)

[epimorfotikikilkis.blogspot.gr](http://epimorfotikikilkis.blogspot.gr)

[epimorf@otenet.gr](mailto:epimorf@otenet.gr)



Certification for the Management System  
EN ISO 9001:2008  
as Lifelong Learning Centre 2" No  
016903Q